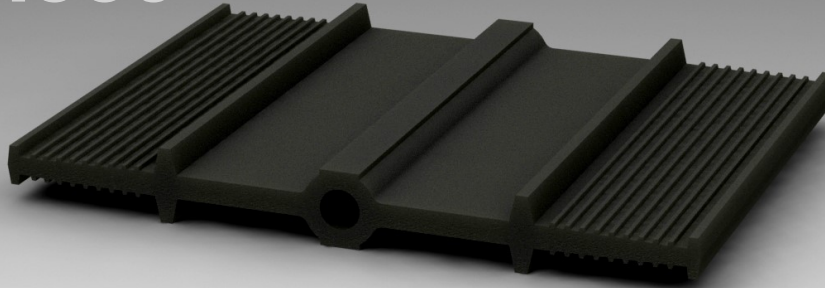


Waterstop Type FM350

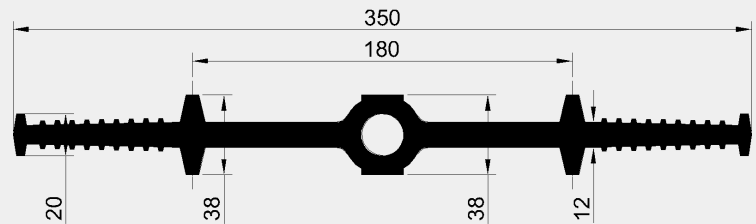


Extruded elastomer waterstop profile for Internal application

TYPICAL APPLICATION

culverts, retaining walls, bridge abutments, foundations, basements, underground construction works, tunnels, aqueducts

Trelleborg FM series waterstops are typically used in new build constructions for both movement joints and construction joints in low performance application.



ADVANTAGES

Easy to install, highest performance, movement in all directions possible, bespoke frame design possible.

TECHNICAL PROPERTIES

- > Gross dimensions 350 x 38 mm
- > Weight 5.9 kg/m
- > Materials SBR
- > Elongation at break $\geq 380\%$
- > Tensile strength $\geq 10 \text{ N/mm}^2$
- > Hardness $62 \pm 5 \text{ Shore A}$
- > Capacity up to 45mm elongation or 20mwc maximum to DIN18197

Product specifications and performance may be subject to project specific conditions or local design constraints. For advice on product performance, application and installation, construction possibilities and technical queries contact Trelleborg Ridderkerk B.V. at trelleborg.com/marine-and-infrastructure, marine_infra@trelleborg.com or call +31 (0)180 495 555